

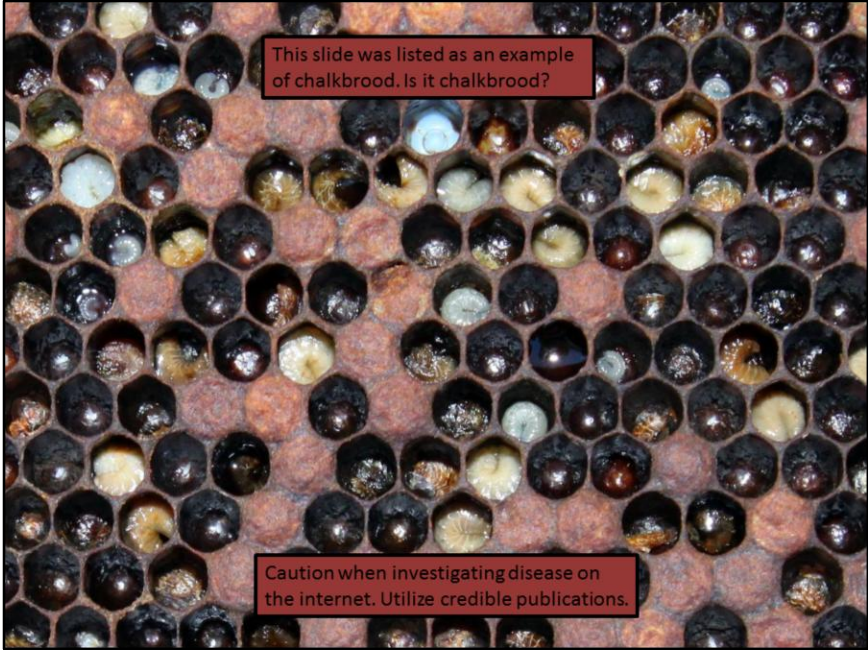


A fungal disease

Look for mummies on bottom board or just outside entrance

Can anyone identify the cells with chalkbrood?



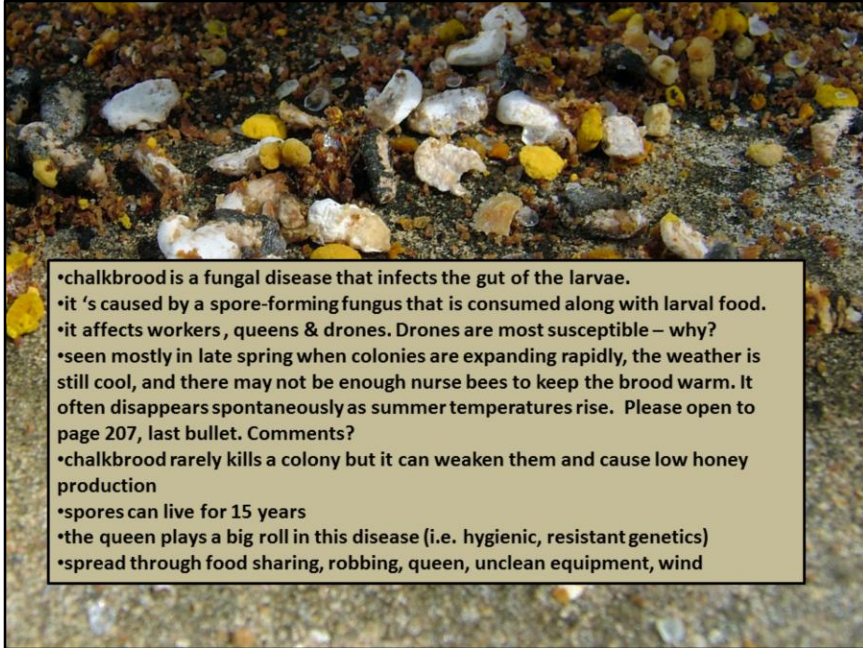


This slide was listed as an example of chalkbrood. Is it chalkbrood?

Caution when investigating disease on the internet. Utilize credible publications.

This is chalkbrood!







- larvae become chalk-white and look a little bit like pollen pellets
- the white eventually becomes gray or black
- it often appears at the perimeter of the brood nest
- Colony fails to build population effectively
- infected or dead larvae are mostly seen at the hive entrance







Number 1 treatment – what is it? Hint:

“if worker bees remove mummified larvae from the hive before the spores are produced (before the mummified larvae transition to grey-black), the spread of the fungus within the hive will be limited” Beeware.org

- move colonies to dry location
- remove infected combs and effectively dispose of them. How?
- add bees and capped brood
- replace queen
- nutrition & stress: Comments?

Break

